

1 0 0 s u r f a c e



other configurations may be possible

diffusers



clear reeded acrylic



microsphere frosted acrylic



cross blade louvre

lamp units

Fluorescent Lamps				
Lamp Unit Length (ECG)				
Lamp Type	W	a		b
		non dim	dim	
 T16/T5	14W/24W	-	-	580
	21W/39W	-	-	880
	28W/54W	-	-	1180
	35W/80W	-	-	1480
 T26/T8	18W	-	-	620
	30W	-	-	925
	36W	-	-	1230
	58W	-	-	1530
 TCS	5W	290	-	110
	7W	320	-	140
	9W	350	-	170
	11W	420	-	240
 TCL	18W	480	660	230
	24W	585	775	335
	36W	675	855	425
	55W	905	975	545

Linear		
Lamp Type	W	a†
 QT-DE	100W/200W 300W	750

† Allows for heat dissipation, may vary.

Unit lengths are approximate and may vary
Specifications subject to change without notice



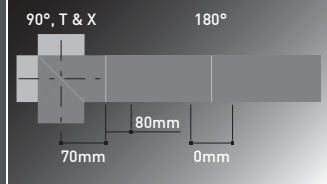
ends



connectors



custom angled connectors available on request



space requirements

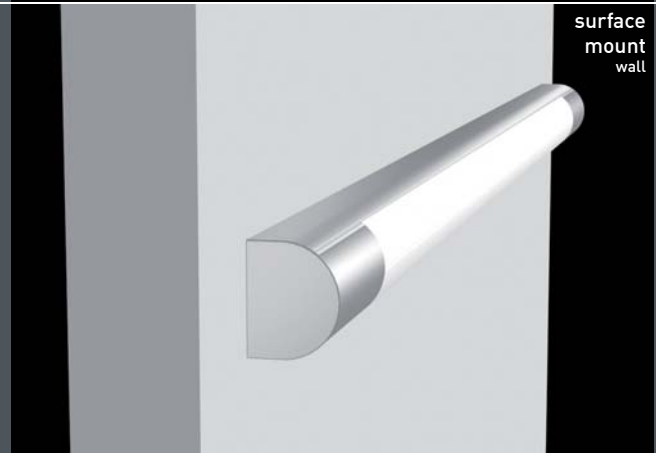
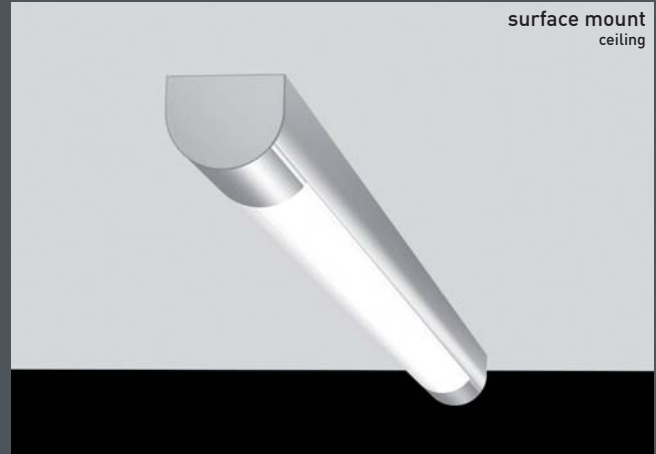
180° coupling is possible mid lamp unit depending on optic and control gear choice. 180° coupling is always preferable between lamp units. 150mm should be allowed.

accessories



- 1 adjustable low voltage spotlights
 - 2 adjustable low voltage MR11/MR16 downlights
 - 3 power outlets
 - 4 emergency systems
- other accessories available on request

suspension



packaging



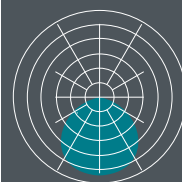
3.5kg/m - 125 x 125 x (L + 200mm)

finish

- clear anodised
- matt textured silver
- matt textured white
- other colour

see kliksystems.com for current colour availability.

photometrics



photometric files available for download from kliksystems.com

100 surface pre-configured



1. Choose your item and lamp unit configuration from the tables on the following pages.

2-6 Select your preferred options from the choices 2 to 6 on the right

7. See an example product specification at the bottom of the page

1. part no.

choose the desired configuration from the tables on the following pages

Part No.	Lamp Unit	Optic	Dimming	Mount	End Plate	Colour
100D105	2x1/28W	MSF or CBL	31	451	51	61
100D106	2x1/35W	MSF or CBL	32	451	51	62
100D107	2x1/54W	MSF or CBL	33	451	51	63

2. optic (direct)



microsphere frosted acrylic (MSF) - 21

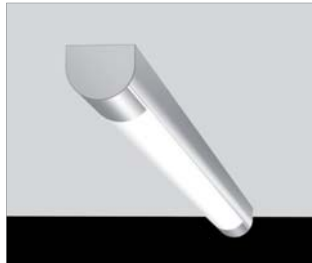
cross blade louvre (CBL) - 22

3. dimming



non-dim 31
1-10V 32
DSI 33
DALI 34

4. suspension



surface mount

451

5. end



end plate 2mm (std) visible fixings 51



end plate 5mm concealed fixings 52

6. colour finish



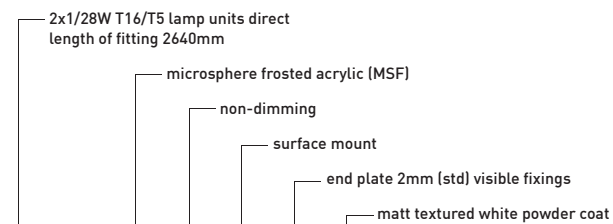
clear anodised 61

matt textured silver powder coat 62

other colour (refer to website) 64

matt textured white powder coat 63

7. example



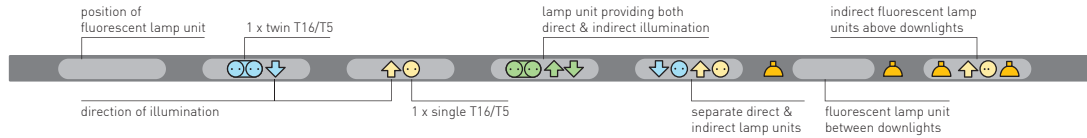
1	2	3	4	5	6	Final product specification
100D105	21	31	451	51	63	100D105 . 21 . 31 . 451 . 51 . 63

Fluorescent lamps will be supplied in colour 840 unless specified otherwise.



Lamp orientation legend

lamp colours represent separate switch wiring ■ ■ ■ ■



■ Data is approximate and subject to change without notice. Product images are representations only - actual product may vary.

part no.	direct	downlight	indirect	optic direct	optic indirect	length (mm)	weight (kgs)	pack size h x w x l (mm)			cubic m ³
100D101	1x1/28W			MSF or CBL		1380	4.8	125	125	1580	0.025
100D102	1x1/35W			MSF or CBL		1680	5.9	125	125	1880	0.029
100D103	1x1/54W			MSF or CBL		1380	4.8	125	125	1580	0.025
100D104	1x1/80W			MSF or CBL		1680	5.9	125	125	1880	0.029
100D105	2x1/28W			MSF or CBL		2640	9.2	125	125	2840	0.044
100D106	2x1/35W			MSF or CBL		3240	11.3	125	125	3440	0.054
100D107	2x1/54W			MSF or CBL		2640	9.2	125	125	2840	0.044
100D108	2x1/80W			MSF or CBL		3240	11.3	125	125	3440	0.054
100D109	3x1/28W			MSF or CBL		3900	13.7	125	125	4100	0.064
100D110	3x1/35W			MSF or CBL		4800	16.8	125	125	5000	0.078
100D111	3x1/54W			MSF or CBL		3900	13.7	125	125	4100	0.064
100D112	3x1/80W			MSF or CBL		4800	16.8	175	330	5000	0.289

preconfigured

100D

If you don't see a configuration you like, no problem, **KLIK** can custom make to your unique specifications.

Just turn back to the **made to measure** pages and follow the specification instructions, or call your local **KLIK** representative.

