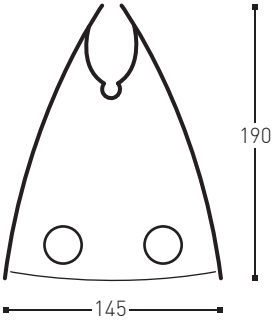




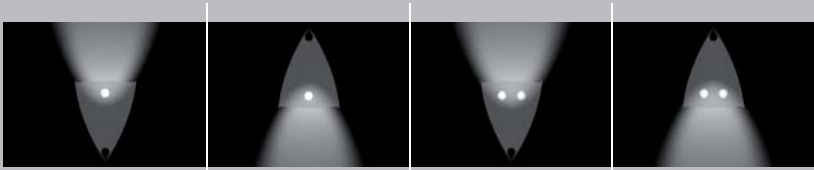
Edith Cowan University

1 4 0  
g e m i n i





1 4 0 g e m i n i



other configurations may be possible

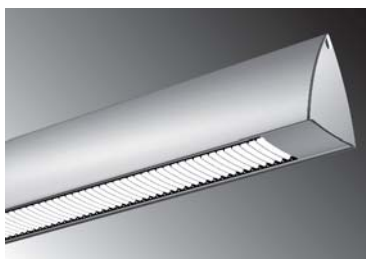
diffusers



clear reeded acrylic



microsphere frosted acrylic



cross blade louvre

lamp units

Fluorescent Lamps		 non-continuous control gear between lamp ends		 continuous control gear behind lamp	
		Lamp Unit Length (ECG)			
Lamp Type	W	a		b	
		non dim	dim		
T16/T5 	14W/24W	-	-	580	
	21W/39W	-	-	880	
	28W/54W	-	-	1180	
	35W/80W	-	-	1480	
T26/T8 	18W	-	-	620	
	30W	-	-	925	
	36W	-	-	1230	
	58W	-	-	1530	
TCS 	5W	290	-	110	
	7W	320	-	140	
	9W	350	-	170	
	11W	420	-	240	
TCL 	18W	480	660	230	
	24W	585	775	335	
	36W	675	855	425	
	55W	905	975	545	

Downlights				
Lamp Type	W	a	b	c
MR11 fixed/adj 	20W/35W	120	205	290
MR16 adj 	20W/35W/50W	150	250	350

Linear			
Lamp Type	W	a†	
HIT-DE fixed 	70W/150W	750	
QT-DE 	100W/200W 300W	750	

† Allows for control gear and heat dissipation, may vary.  
Unit lengths are approximate and may vary  
Specifications subject to change without notice



ends



countersunk philips head screws

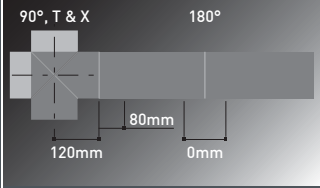


counterbored socket head cap screws

connectors



custom angled connectors available on request



space requirements

180° coupling is possible mid lamp unit depending on optic and control gear choice. 180° coupling is always preferable between lamp units. 150mm should be allowed.

accessories



- 1 adjustable low voltage MR16 downlights
  - 2 concealed PA speaker systems.
  - 3 emergency systems
- other accessories available on request



3

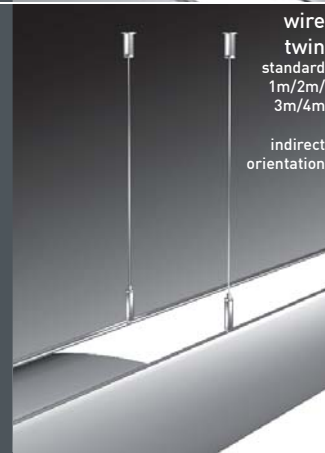
suspension



wire single standard 1m/2m/3m/4m  
direct orientation



wire & sling standard 1m/2m/3m/4m  
indirect orientation



wire twin standard 1m/2m/3m/4m  
indirect orientation



rod standard 1m/2m/3m/4m  
indirect orientation

packaging



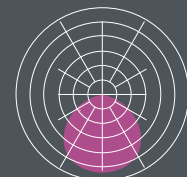
8.2kg/m - 175 x 330 x (l + 200mm)

finish

- clear anodised
- matt textured silver
- matt textured white
- other colour

other finishes available on request

photometrics



photometric files available for download from [kliksystems.com](http://kliksystems.com)

# 140 gemini pre-configured



1. Choose your item and lamp unit configuration from the tables on the following pages.

2-6 Select your preferred options from the choices 2 to 6 on the right

7. See an example product specification at the bottom of the page

## 1. part no.

choose the desired configuration from the tables on the following pages

140G117	2x2/28W	3X1/MR16 50W	MSF or CBL	2940
140G118	2x2/35W	3X1/MR16 50W	MSF or CBL	3540
140G119	2x2/54W	3X1/MR16 50W	MSF or CBL	2940

## 2. optic (direct)



microsphere frosted acrylic (MSF) - 21

cross blade louvre (CBL) - 22

no optic direct  
downlight only - 24

## 3. dimming



non-dim 31  
1-10V 32  
DSI 33  
DALI 34

specify circuit(s) to dim

## 4. suspension



wire single

1m - 411  
2m - 412  
3m - 413  
4m - 414



wire sling

1m - 421  
2m - 422  
3m - 423  
4m - 424

for use with indirect orientation only



wire twin

1m - 431  
2m - 432  
3m - 433  
4m - 434

for use with indirect orientation only



rod

600mm - 441  
1.2m - 442

for use with indirect orientation only

## 5. end



countersunk philips head screws

3mm (std) - 51



counterbored socket head cap screws

5mm - 56

## 6. colour finish



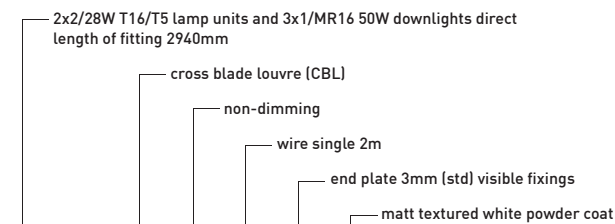
clear anodised 61

other colour (refer to website) 64

matt textured silver powder coat 62

matt textured white powder coat 63

## 7. example



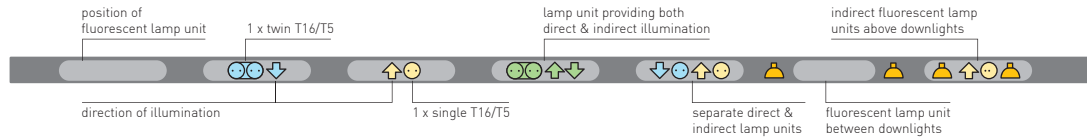
1	2	3	4	5	6	Final product specification
140G117	22	31	412	51	63	140G117 . 22 . 31 . 412 . 51 . 63

Fluorescent lamps will be supplied in colour 840 unless specified otherwise, please specify wattage and beam angle of downlights. All downlights are adjustable where possible



Lamp orientation legend

lamp colours represent separate switch wiring ■ ■ ■ ■



■ Data is approximate and subject to change without notice. Product images are representations only - actual product may vary.

part no.	lamp configuration			optic	length (mm)	weight (kgs)	pack size			cubic m <sup>3</sup>
	direct	downlight	indirect				h	w	L (mm)	
140G101	1x2/28W			MSF or CBL	1380	11.3	175	330	1580	0.091
140G102	1x2/35W			MSF or CBL	1680	13.8	175	330	1880	0.109
140G103	1x2/54W			MSF or CBL	1380	11.3	175	330	1580	0.091
140G104	1x2/80W			MSF or CBL	1680	13.8	175	330	1880	0.109
140G105	2x2/28W			MSF or CBL	2640	21.6	175	330	2840	0.164
140G106	2x2/35W			MSF or CBL	3240	26.6	175	330	3440	0.199
140G107	2x2/54W			MSF or CBL	2640	21.6	175	330	2840	0.164
140G108	2x2/80W			MSF or CBL	3240	26.6	175	330	3440	0.199
140G109	3x2/28W			MSF or CBL	3900	32.0	175	330	4100	0.237
140G110	3x2/35W			MSF or CBL	4800	39.4	175	330	5000	0.289
140G111	3x2/54W			MSF or CBL	3900	32.0	175	330	4100	0.237
140G112	3x2/80W			MSF or CBL	4800	39.4	175	330	5000	0.289
140G113	1x2/28W	2X1/MR16 50W		MSF or CBL	1580	13.0	175	330	1780	0.103
140G114	1x2/35W	2X1/MR16 50W		MSF or CBL	1880	15.4	175	330	2080	0.120
140G115	1x2/54W	2X1/MR16 50W		MSF or CBL	1580	13.0	175	330	1780	0.103
140G116	1x2/80W	2X1/MR16 50W		MSF or CBL	1880	15.4	175	330	2080	0.120
140G117	2x2/28W	3X1/MR16 50W		MSF or CBL	2940	24.1	175	330	3140	0.181
140G118	2x2/35W	3X1/MR16 50W		MSF or CBL	3540	29.0	175	330	3740	0.216
140G119	2x2/54W	3X1/MR16 50W		MSF or CBL	2940	24.1	175	330	3140	0.181
140G120	2x2/80W	3X1/MR16 50W		MSF or CBL	3540	29.0	175	330	3740	0.216
140G121	3x2/28W	4X1/MR16 50W		MSF or CBL	4300	35.3	175	330	4500	0.260
140G122	3x2/35W	4X1/MR16 50W		MSF or CBL	5200	42.6	175	330	5400	0.312
140G123	3x2/54W	4X1/MR16 50W		MSF or CBL	4300	35.3	175	330	4500	0.260
140G124	3x2/80W	4X1/MR16 50W		MSF or CBL	5200	42.6	175	330	5400	0.312
140G125	1x2/28W	2X2/MR16 50W		MSF or CBL	1780	14.6	175	330	1980	0.114
140G126	1x2/35W	2X2/MR16 50W		MSF or CBL	2080	17.1	175	330	2280	0.132
140G127	1x2/54W	2X2/MR16 50W		MSF or CBL	1780	14.6	175	330	1980	0.114
140G128	1x2/80W	2X2/MR16 50W		MSF or CBL	2080	17.1	175	330	2280	0.132

preconfigured

140G

Consider transport and site access when ordering long lengths.

If you don't see a configuration you like, no problem, **KLIK** can custom make to your unique specifications.

Just turn back to the **made to measure** pages and follow the specification instructions, or call your local **KLIK** representative.



part no.	direct	downlight	indirect	optic direct	optic indirect	length (mm)	weight (kgs)	pack size h x w x l (mm)			cubic m <sup>3</sup>
140G129	2x2/28W	3X2/MR16 50W		MSF or CBL		3240	26.6	175	330	3440	0.199
140G130	2x2/35W	3X2/MR16 50W		MSF or CBL		3840	31.5	175	330	4040	0.233
140G131	2x2/54W	3X2/MR16 50W		MSF or CBL		3240	26.6	175	330	3440	0.199
140G132	2x2/80W	3X2/MR16 50W		MSF or CBL		3840	31.5	175	330	4040	0.233
140G133	3x2/28W	4X2/MR16 50W		MSF or CBL		4700	38.5	175	330	4900	0.283
140G134	3x2/35W	4X2/MR16 50W		MSF or CBL		5600	45.9	175	330	5800	0.335
140G135	3x2/54W	4X2/MR16 50W		MSF or CBL		4700	38.5	175	330	4900	0.283
140G136	3x2/80W	4X2/MR16 50W		MSF or CBL		5600	45.9	175	330	5800	0.335
140G137	Twin MR16 50W					250	2.1	175	330	450	0.026
140G138	Triple MR16 50W					350	2.9	175	330	550	0.032
140G139	Quad MR16 50W					450	3.7	175	330	650	0.038
140G140	2X1/MR16 50W					710	5.8	175	330	910	0.053
140G141	3X1/MR16 50W					1210	9.9	175	330	1410	0.081
140G142	4X1/MR16 50W					1710	14.0	175	330	1910	0.110
140G143	2X2/MR16 50W					910	7.5	175	330	1110	0.064
140G144	3X2/MR16 50W					1510	12.4	175	330	1710	0.099
140G145	4X2/MR16 50W					2110	17.3	175	330	2310	0.133

control gear for twin, triple and quad fittings to be ceiling mounted or located in ceiling space

If you don't see a configuration you like, no problem, **KLIK** can custom make to your unique specifications.

Just turn back to the **made to measure** pages and follow the specification instructions, or call your local **KLIK** representative.



