



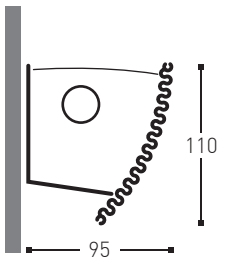
1 4 5  
m i d d r i f t  
  
1 4 5  
d e m i d u n e

Australian Film Television and Radio School

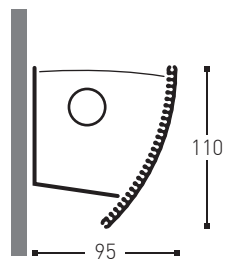


145DD

145MD



1 4 5  
m i d d r i f t



1 4 5  
d e m i d u n e



other configurations may be possible

diffusers - mid drift



clear reeded acrylic



microsphere frosted acrylic

diffusers - demi dune



clear reeded acrylic



microsphere frosted acrylic

lamp units

Fluorescent Lamps					
		Lamp Unit Length (ECG)			
Lamp Type	W	a		b	
		non dim	dim		
 T16/T5	14W/24W	-	-	580	
	21W/39W	-	-	880	
	28W/54W	-	-	1180	
	35W/80W	-	-	1480	
 T26/T8	18W	-	-	620	
	30W	-	-	925	
	36W	-	-	1230	
	58W	-	-	1530	
 TCS	5W	290	-	110	
	7W	320	-	140	
	9W	350	-	170	
	11W	420	-	240	
 TCL	18W	480	660	230	
	24W	585	775	335	
	36W	675	855	425	
	55W	905	975	545	

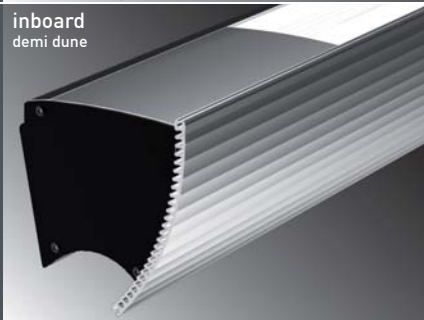
Linear			
Lamp Type	W	a†	
 QT-DE	100W/200W 300W	750	

† Allows for heat dissipation, may vary.  
 Unit lengths are approximate and may vary  
 Specifications subject to change without notice

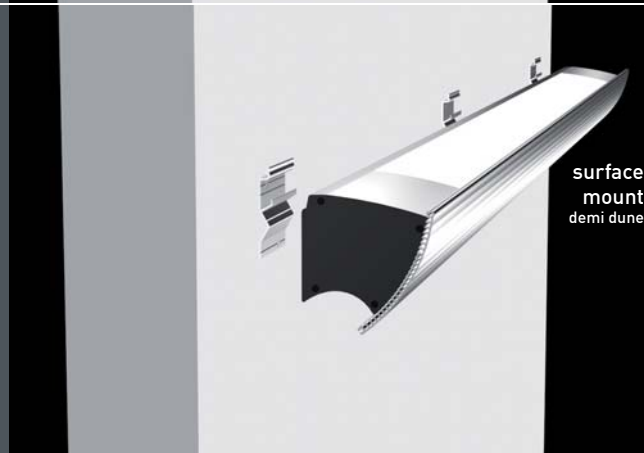
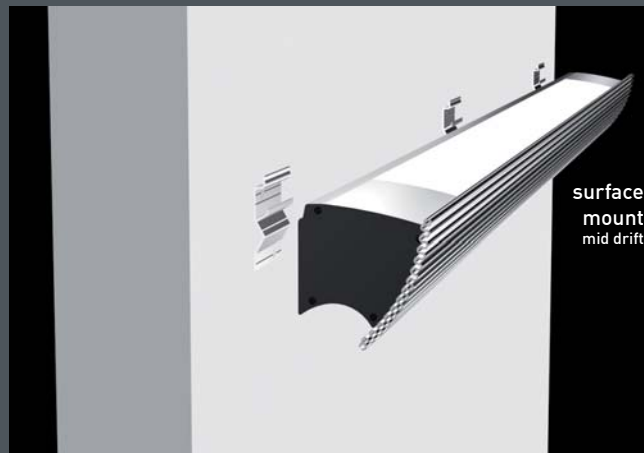
145MD/DD



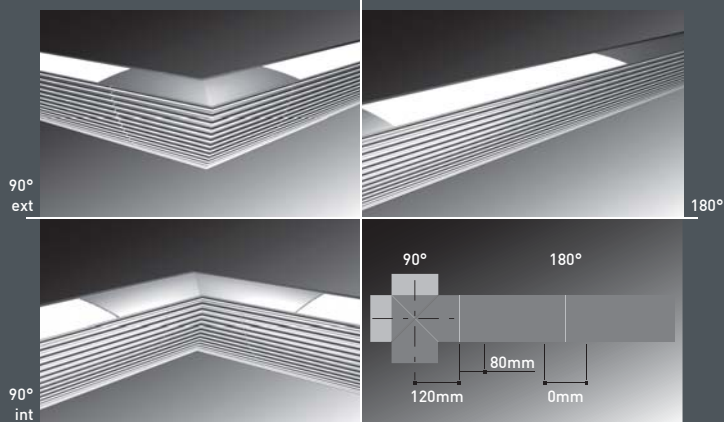
ends



suspension



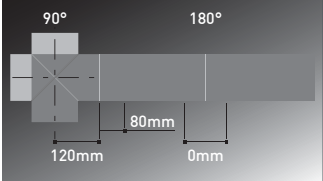
connectors - mid drift



90° ext

180°

90° int

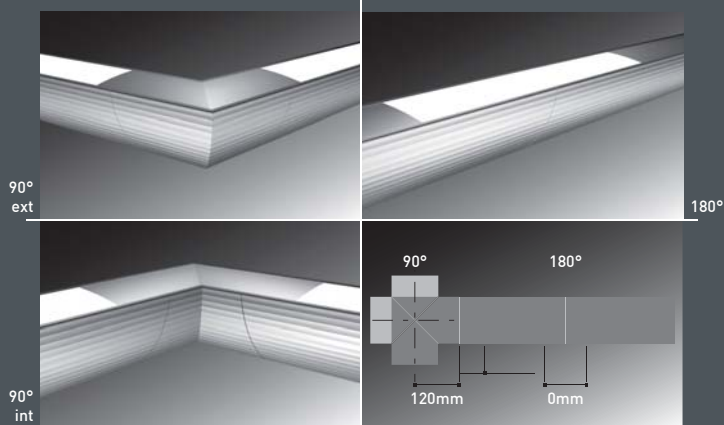


custom angled connectors available on request

space requirements

180° coupling is possible mid lamp unit depending on optic and control gear choice. 180° coupling is always preferable between lamp units. 150mm should be allowed.

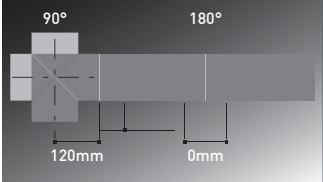
connectors - demi dune



90° ext

180°

90° int



custom angled connectors available on request

space requirements



180° coupling is possible mid lamp unit depending on optic and control gear choice. 180° coupling is always preferable between lamp units. 150mm should be allowed.

packaging



4.5kg/m - 130 x 190 x (l + 200mm)

finish

-  clear anodised
-  other anodised

see [klikssystem.com](http://klikssystem.com) for current colour availability.

photometrics



photometric files available for download from [klikssystem.com](http://klikssystem.com)

145MD/DD



# 145 mid drift/ demi dune pre-configured



1. Choose your item and lamp unit configuration from the tables on the following pages.

2-6 Select your preferred options from the choices 2 to 6 on the right

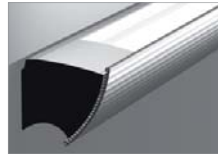
7. See an example product specification at the bottom of the page

## 1. part no.

choose the desired configuration from the tables on the following pages

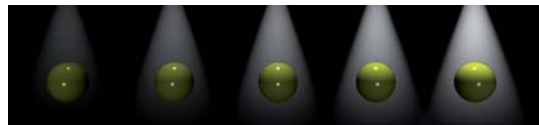
145MD105	2x1/28W	CR	2410
145MD106	2x1/35W	CR	3010
145MD107	2x1/54W	CR	2410

## 2. optic (indirect)



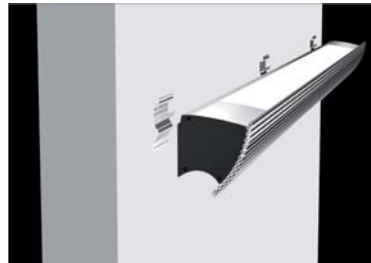
clear reeded acrylic (CR) - 25

## 3. dimming



non-dim 31  
1-10V 32  
DSI 33  
DALI 34

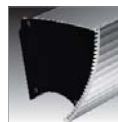
## 4. suspension



surface mount

451

## 5. end



end plate inboard

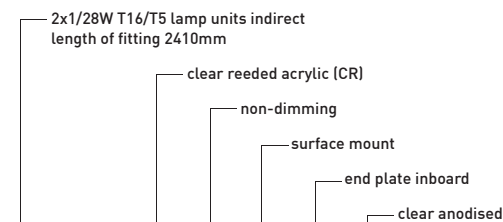
54

## 6. colour finish

clear anodised 61



## 7. example



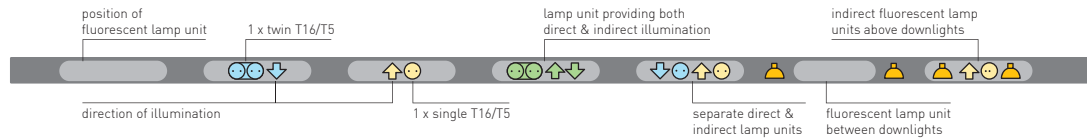
1	2	3	4	5	6	Final product specification
145MD	25	31	451	54	61	145MD . 25 . 31 . 451 . 54 . 61

Fluorescent lamps will be supplied in colour 840 unless specified otherwise.



Lamp orientation legend

Lamp colours represent separate switch wiring ■ ■ ■ ■



■ Data is approximate and subject to change without notice. Product images are representations only - actual product may vary.

part no.	direct	downlight	indirect	optic direct	optic indirect	length (mm)	weight (kgs)	pack size h x w x l (mm)			cubic m <sup>3</sup>
145MD101			1x1/28W		CR	1430	6.4	120	265	1630	0.052
145MD102			1x1/35W		CR	1730	7.8	120	265	1930	0.061
145MD103			1x1/54W		CR	1430	6.4	120	265	1630	0.052
145MD104			1x1/80W		CR	1730	7.8	120	265	1930	0.061
145MD105			2x1/28W		CR	2610	11.7	120	265	2810	0.089
145MD106			2x1/35W		CR	3210	14.4	120	265	3410	0.108
145MD107			2x1/54W		CR	2610	11.7	120	265	2810	0.089
145MD108			2x1/80W		CR	3210	14.4	120	265	3410	0.108
145MD109			3x1/28W		CR	3780	17.0	120	265	3980	0.127
145MD110			3x1/35W		CR	4680	21.1	120	265	4880	0.155
145MD111			3x1/54W		CR	3780	17.0	120	265	3980	0.127
145MD112			3x1/80W		CR	4680	21.1	120	265	4880	0.155
145DD101			1x1/28W		CR	1430	6.4	120	265	1630	0.052
145DD102			1x1/35W		CR	1730	7.8	120	265	1930	0.061
145DD103			1x1/54W		CR	1430	6.4	120	265	1630	0.052
145DD104			1x1/80W		CR	1730	7.8	120	265	1930	0.061
145DD105			2x1/28W		CR	2610	11.7	120	265	2810	0.089
145DD106			2x1/35W		CR	3210	14.4	120	265	3410	0.108
145DD107			2x1/54W		CR	2610	11.7	120	265	2810	0.089
145DD108			2x1/80W		CR	3210	14.4	120	265	3410	0.108
145DD109			3x1/28W		CR	3780	17.0	120	265	3980	0.127
145DD110			3x1/35W		CR	4680	21.1	120	265	4880	0.155
145DD111			3x1/54W		CR	3780	17.0	120	265	3980	0.127
145DD112			3x1/80W		CR	4680	21.1	120	265	4880	0.155

preconfigured

145MD/DD

Consider transport and site access when ordering long lengths.

If you don't see a configuration you like, no problem, **KLIK** can custom make to your unique specifications.

Just turn back to the **made to measure** pages and follow the specification instructions, or call your local **KLIK** representative.

