

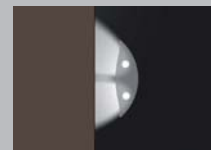
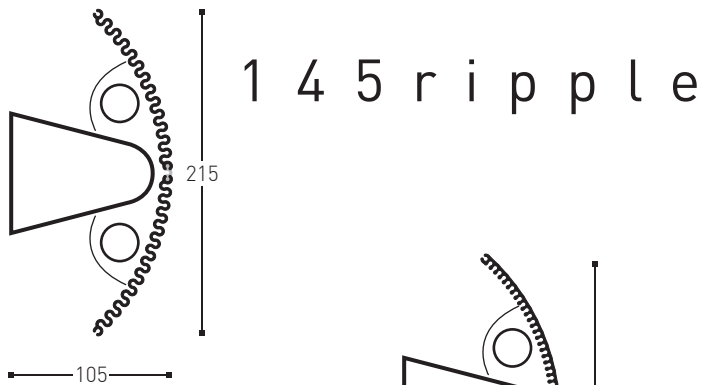
1 4 5
r i p p l e
1 4 5
s u n r a y





145RI

145SU



other configurations may be possible

145 ripple/sunray pre-configured



1. Choose your item and lamp unit configuration from the tables on the following pages.

2-6 Select your preferred options from the choices 2 to 6 on the right

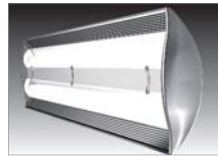
7. See an example product specification at the bottom of the page

1. part no.

choose the desired configuration from the tables on the following pages

145R1101	1x2/14W	CR	700	}
145R1102	1x2/24W	CR	700	

2. optic (indirect)



clear reeded acrylic (CR) - 25

3. dimming



non-dim	31
1-10V	32
DSI	33
DALI	34

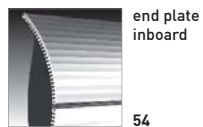
4. suspension



surface mount

451

5. end



end plate inboard

54



end plate moulded

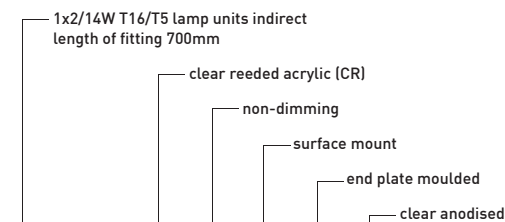
55

6. colour finish

clear anodised 61



7. example



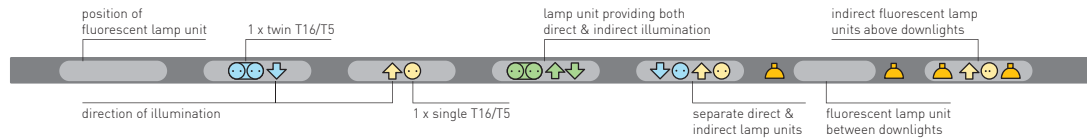
1	2	3	4	5	6	Final product specification
145R101	25	31	451	55	61	145R101 . 25 . 31 . 451 . 55 . 61

Fluorescent lamps will be supplied in colour 840 unless specified otherwise.



Lamp orientation legend

lamp colours represent separate switch wiring ■ ■ ■ ■



■ Data is approximate and subject to change without notice. Product images are representations only - actual product may vary.

part no.	direct	downlight	indirect	optic direct	optic indirect	length (mm)	weight (kgs)	pack size h x w x l (mm)			cubic m ³
145RI101			1x2/14W		CR	700	3.6	120	265	900	0.029
145RI102			1x2/24W		CR	700	3.6	120	265	900	0.029
145SU101			1x2/14W		CR	700	3.6	120	265	900	0.029
145SU102			1x2/24W		CR	700	3.6	120	265	900	0.029

preconfigured

If you don't see a configuration you like, no problem, **KLIK** can custom make to your unique specifications.

Just turn back to the **made to measure** pages and follow the specification instructions, or call your local **KLIK** representative.

145RI/SU

