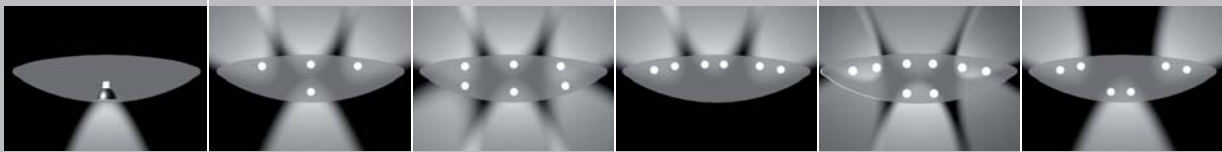


500
s c o r p i o n s



other configurations may be possible



500scorpius pre-configured



1. Choose your item and lamp unit configuration from the tables on the following pages.

2-6 Select your preferred options from the choices 2 to 6 on the right

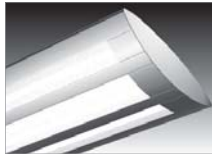
7. See an example product specification at the bottom of the page

1. part no.

choose the desired configuration from the tables on the following pages

500S105	2x1/28W	2x2x2/28W	2x1/28W	MSF	CR 2640

2. optic (direct)



microsphere frosted acrylic (MSF) - 21

3. dimming



non-dim 31
1-10V 32
DSI 33
DALI 34
specify circuit(s) to dim

4. suspension



wire sling

1m - 421
2m - 422
3m - 423
4m - 424



wire twin

1m - 431
2m - 432
3m - 433
4m - 434



rod

600mm - 441
1.2m - 442

5. end



countersunk philips head screws

3mm (std) - 51



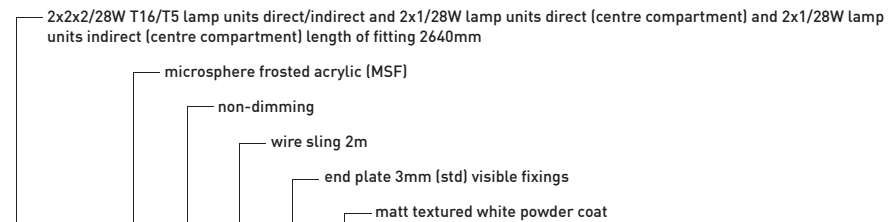
counterbored socket head cap screws

5mm - 56

6. colour finish

clear anodised 61		other colour (refer to website) 64
matt textured silver powder coat 62		matt textured white powder coat 63

7. example



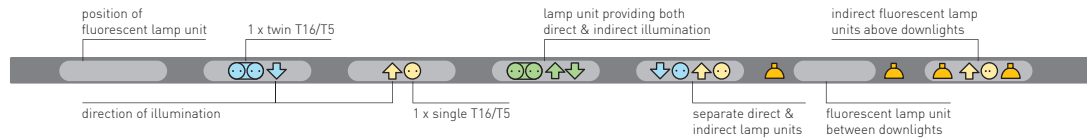
1	2	3	4	5	6	Final product specification
500S105	21	31	422	51	63	500S105 . 21 . 31 . 422 . 51 . 63

Fluorescent lamps will be supplied in colour 840 unless specified otherwise.



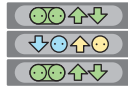
Lamp orientation legend

lamp colours represent separate switch wiring ■ ■ ■ ■

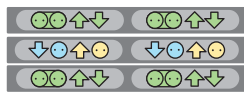


■ Data is approximate and subject to change without notice. Product images are representations only - actual product may vary.

part no.	direct	direct/indirect	indirect	optic direct	optic indirect	length (mm)	weight (kgs)	pack size			cubic m ³		
								h	x	w	x	l (mm)	



500S101	1x1/28W	2x1x2/28W	1x1/28W	MSF	CR	1380	40.3	200	560	1580	0.177
500S102	1x1/35W	2x1x2/35W	1x1/35W	MSF	CR	1680	49.1	200	560	1880	0.211
500S103	1x1/54W	2x1x2/54W	1x1/54W	MSF	CR	1380	40.3	200	560	1580	0.177
500S104	1x1/80W	2x1x2/80W	1x1/80W	MSF	CR	1680	49.1	200	560	1880	0.211



500S105	2x1/28W	2x2x2/28W	2x1/28W	MSF	CR	2640	77.1	200	560	2840	0.318
500S106	2x1/35W	2x2x2/35W	2x1/35W	MSF	CR	3240	94.6	200	560	3440	0.385
500S107	2x1/54W	2x2x2/54W	2x1/54W	MSF	CR	2640	77.1	200	560	2840	0.318
500S108	2x1/80W	2x2x2/80W	2x1/80W	MSF	CR	3240	94.6	200	560	3440	0.385

preconfigured

If you don't see a configuration you like, no problem, **KLIK** can custom make to your unique specifications.

Just turn back to the **made to measure** pages and follow the specification instructions, or call your local **KLIK** representative.

500S

