

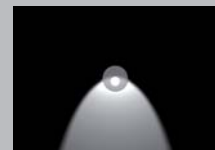


The Scots College

6 0 r o u n d



6 0 r o u n d



diffusers



clear reeded acrylic



microsphere frosted acrylic



cross blade louvre

lamp units

Fluorescent Lamps		 non-continuous control gear between lamp ends		 continuous control gear behind lamp	
		Lamp Unit Length (ECG)			
Lamp Type	W	a		b	
		non dim	dim		
 T16/T5	14W/24W	-	-	580	
	21W/39W	-	-	880	
	28W/54W	-	-	1180	
	35W/80W	-	-	1480	
 T26/T8	18W	980	1050	-	
	30W	1285	1355	-	
	36W	1590	1660	-	
	58W	1890	1960	-	

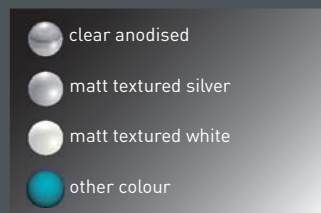
Unit lengths are approximate and may vary
Specifications subject to change without notice

packaging



2.5kg/m - 75 x 75 x (l + 200mm)

finish



other finishes available on request

photometrics



photometric files available for download from kliksystems.com

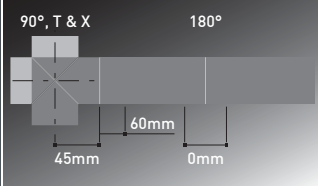
ends



connectors



custom angled connectors available on request



space requirements

180° coupling is possible mid lamp unit depending on optic and control gear choice. 180° coupling is always preferable between lamp units. 150mm should be allowed.

accessories



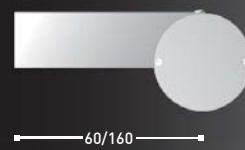
1 adjustable low voltage spotlights
2 power outlets
other accessories available on request



suspension



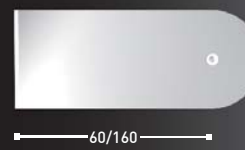
hollow box bracket



top wall bracket



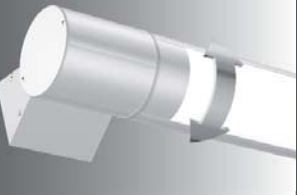
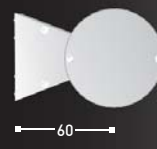
end wall bracket - pivot



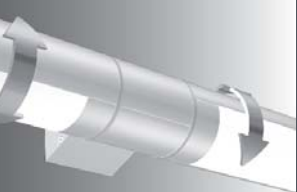
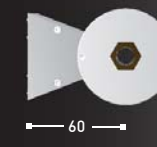
mid wall bracket - pivot



hollow wall bracket - end



hollow wall bracket - mid



hollow wall bracket - central fixed



60 round pre-configured



1. Choose your item and lamp unit configuration from the tables on the following pages.

2-6 Select your preferred options from the choices 2 to 6 on the right

7. See an example product specification at the bottom of the page

1. part no.

choose the desired configuration from the tables on the following pages

60R105	2x1/28W		MSF or CBL	2640
60R106	2x1/35W		MSF or CBL	3240
60R107	2x1/54W		MSF or CBL	2640

2. optic (direct)



microsphere frosted acrylic (MSF) - 21

cross blade louvre (CBL) - 22

3. dimming



non-dim 31
1-10V 32
DSI 33
DALI 34

specify circuit(s) to dim

4. suspension



wire single

1m - 411
2m - 412
3m - 413
4m - 414

5. end



end plate 2mm (std) visible fixings
51

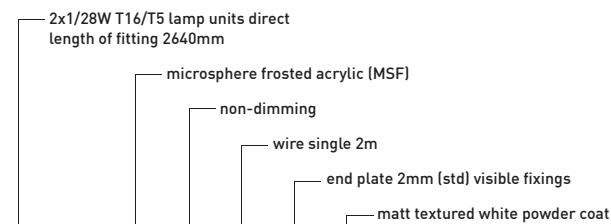


end plate 5mm concealed fixings
52

6. colour finish



7. example



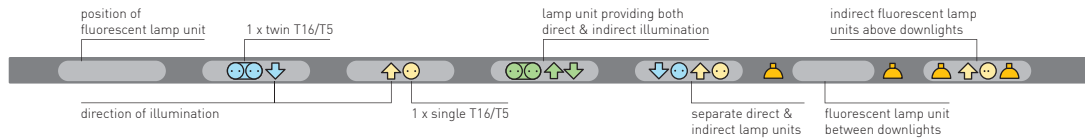
1	2	3	4	5	6	Final product specification
60R105	21	31	412	51	63	60R105 . 21 . 31 . 412 . 51 . 63

Fluorescent lamps will be supplied in colour 840 unless specified otherwise.



Lamp orientation legend

Lamp colours represent separate switch wiring ■ ■ ■ ■



■ Data is approximate and subject to change without notice. Product images are representations only - actual product may vary.

part no.	direct	downlight	indirect	optic direct	optic indirect	length (mm)	weight (kgs)	pack size (mm)			cubic m ³
60R101	1x1/28W			MSF or CBL		1380	3.5	75	75	1580	0.009
60R102	1x1/35W			MSF or CBL		1680	4.2	75	75	1880	0.011
60R103	1x1/54W			MSF or CBL		1380	3.5	75	75	1580	0.009
60R104	1x1/80W			MSF or CBL		1680	4.2	75	75	1880	0.011
60R105	2x1/28W			MSF or CBL		2640	6.6	75	75	2840	0.016
60R106	2x1/35W			MSF or CBL		3240	8.1	75	75	3440	0.019
60R107	2x1/54W			MSF or CBL		2640	6.6	75	75	2840	0.016
60R108	2x1/80W			MSF or CBL		3240	8.1	75	75	3440	0.019
60R109	3x1/28W			MSF or CBL		3900	9.8	75	75	4100	0.023
60R110	3x1/35W			MSF or CBL		4800	12.0	75	75	5000	0.028
60R111	3x1/54W			MSF or CBL		3900	9.8	75	75	4100	0.023
60R112	3x1/80W			MSF or CBL		4800	12.0	75	75	5000	0.028

preconfigured

60R

If you don't see a configuration you like, no problem, **KLIK** can custom make to your unique specifications.

Just turn back to the **made to measure** pages and follow the specification instructions, or call your local **KLIK** representative.

