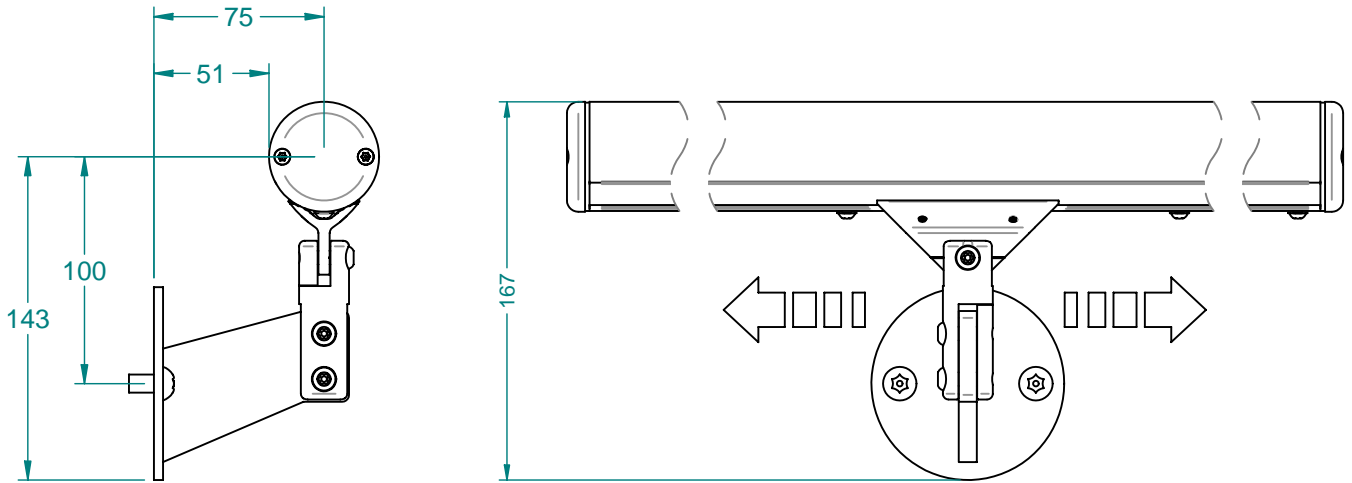
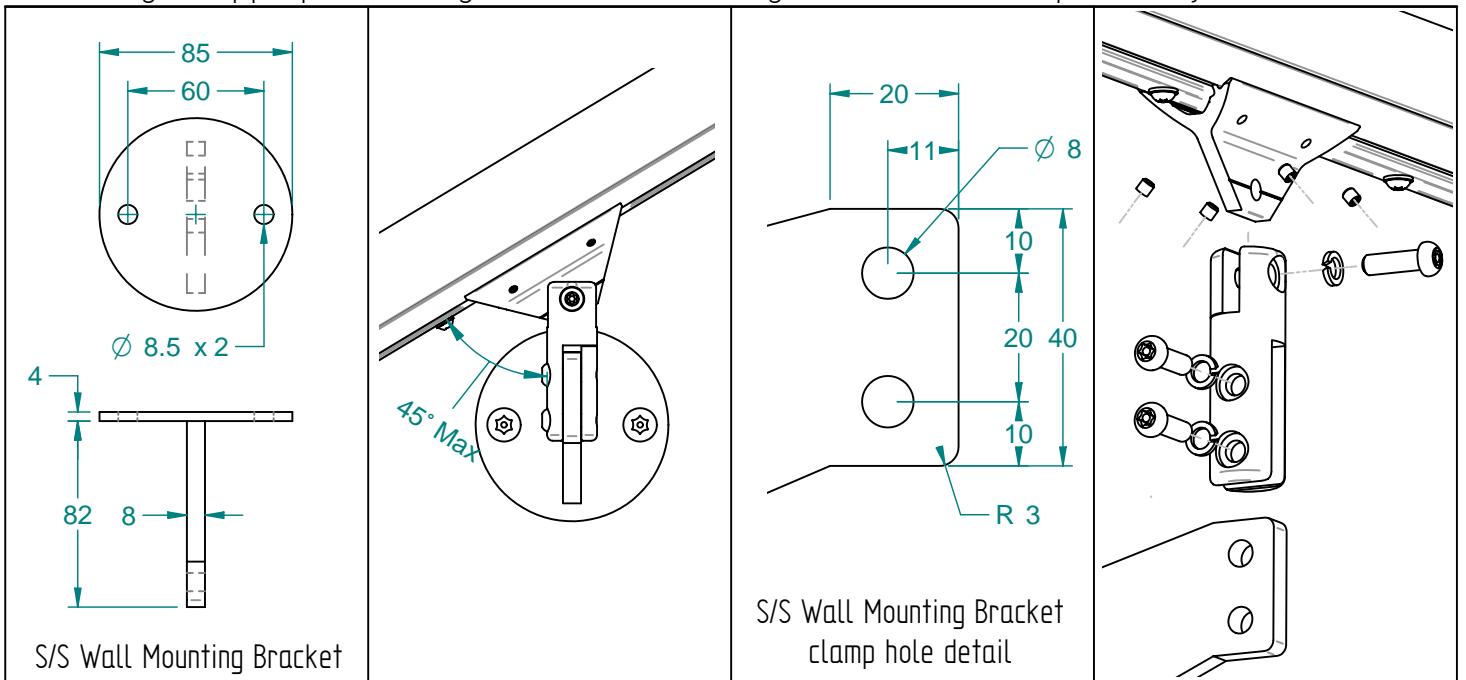


48HR Wall Bracket Detail

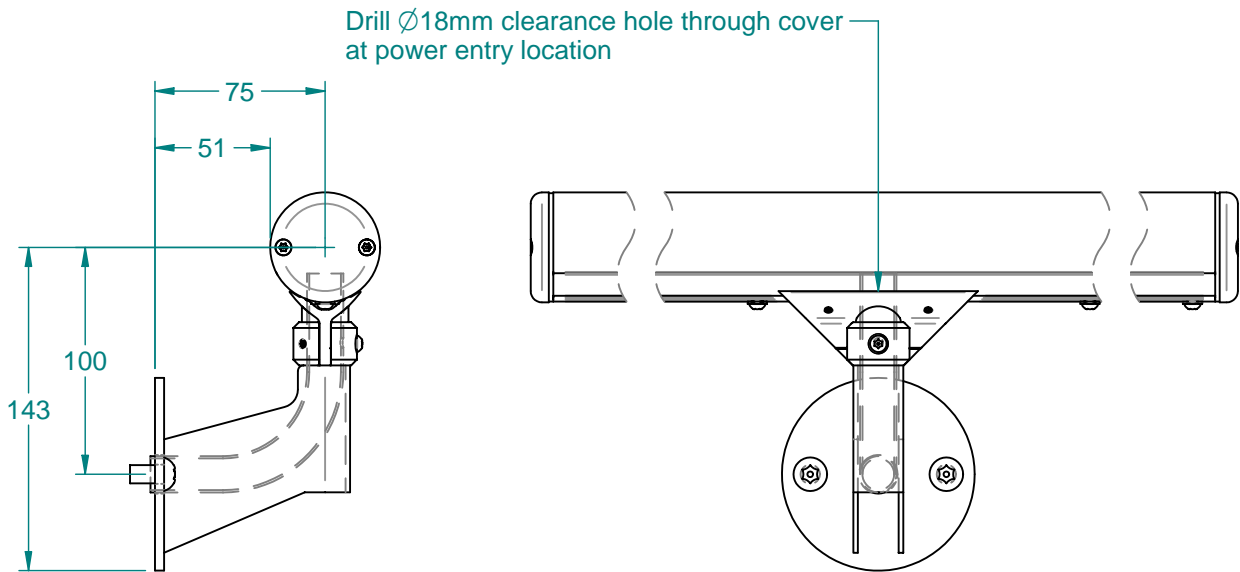


Important

Choosing an appropriate fixing to suit the mounting surface is the responsibility of the installer.



48HR Power Entry Wall Bracket Detail



Power Entry brackets are fixed into locations on site. Once the exact power entry bracket location has been determined, the cover must be marked to the centre of the bracket / post position. Remove the cover and drill or hole saw an 16.5 to 18mm hole through the cover. Slide the power entry slide bracket over the hole in the cover and lock into position. Connect the flex to the provided terminal strip and feed it through the cover & slide bracket assembly. Re-fit the cover, be sure to replace the star washers and not to over tighten the screws. Feed the flex through the bracket and insert the bracket into the slide bracket assembly and insert M4 x 8mm MD4 button head screw and tighten all grub screws.

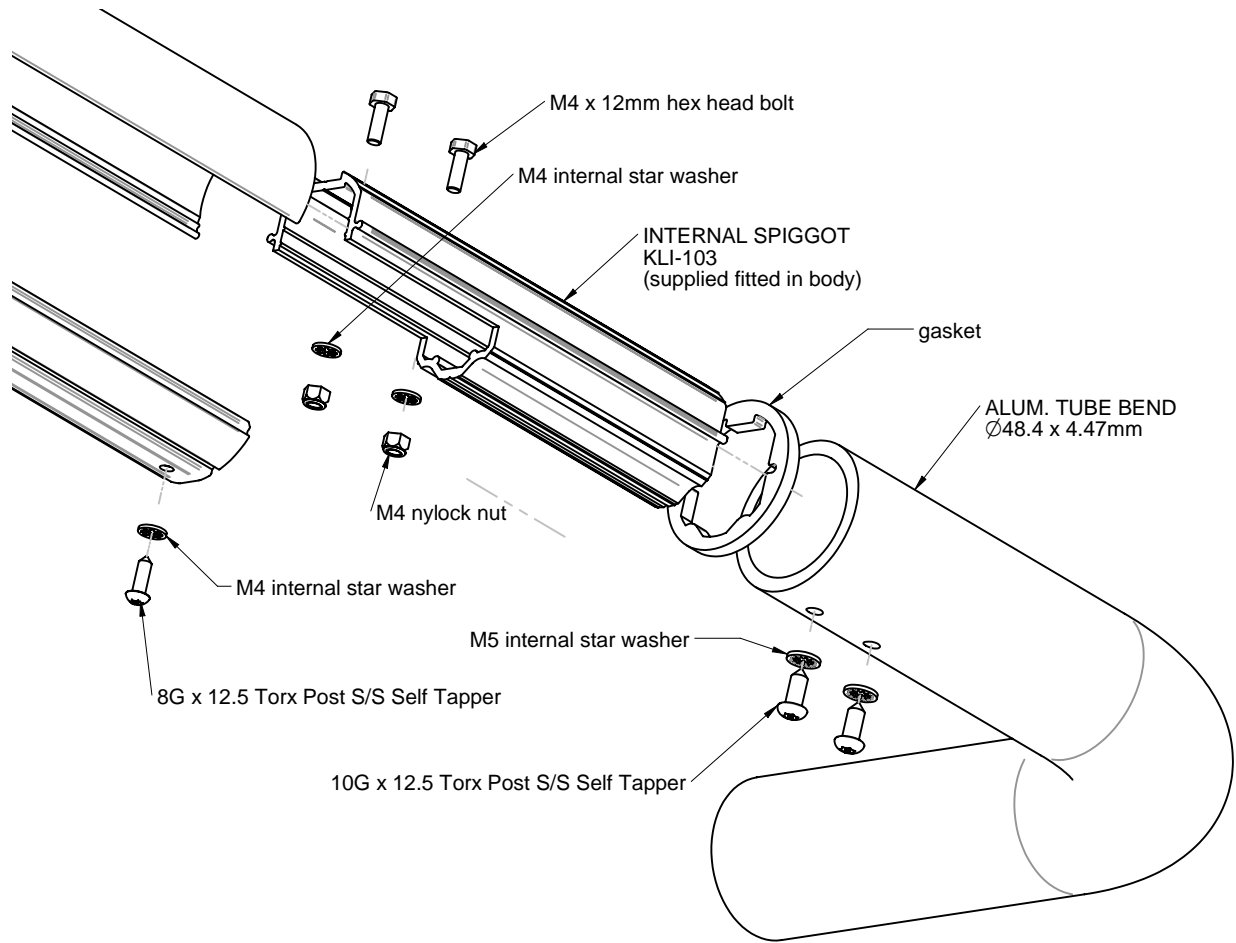
NOTE: Double insulated cable must be used through bracket

Important

Choosing an appropriate fixing to suit the mounting surface is the responsibility of the installer.

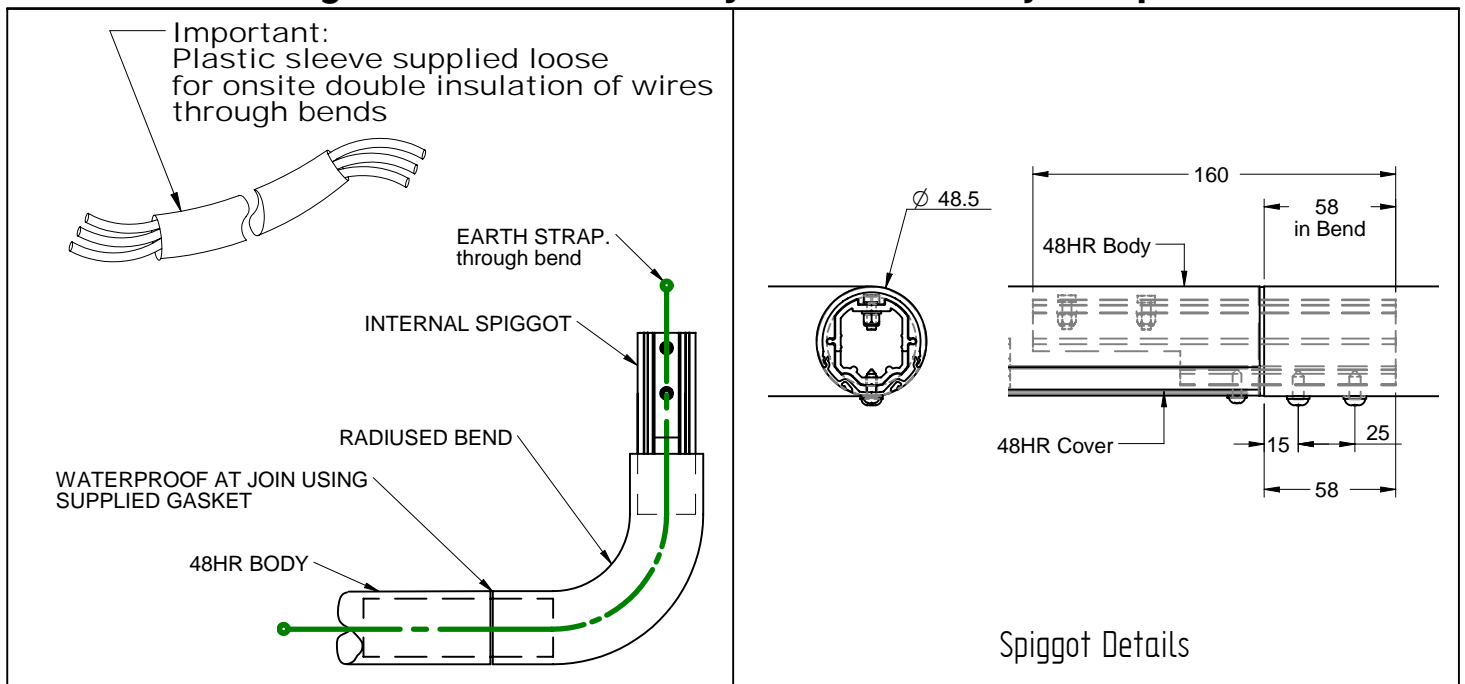
<p>S/S PE Wall Mounting Bracket</p>	<p>PE 16mm Wall Bracket</p>	<p>M4 x 8mm MD4 Button Head S/S screwed into Ø4.2mm hole in tube. Acts as anti-vandal fixing and pin to lock bracket onto post. (can't slip)</p> <p>Earthing bracket Detail</p>	<p>Double insulated cable must be used through bracket, run internal wires through PVC sleeve past bracket / PE location</p> <p>Cover earthed via earth strap onto internal security extrusion.</p>
-------------------------------------	-----------------------------	---	---

48HR Bend Attachment Detail

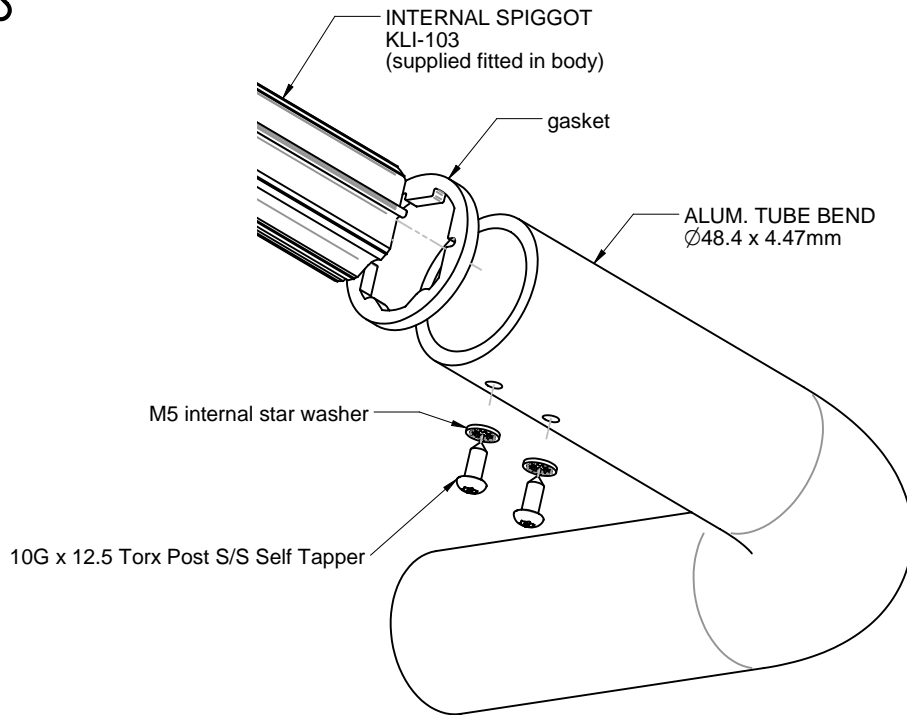


Important

Ensure gasket is fitted at all joins and is fully compressed



48HR Bend-to-bend Attachment Detail



Important

Ensure gasket is fitted at all joins and is fully compressed

